

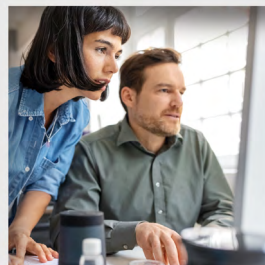
LIVING WITH ADHD IN THE PICTURE?



Children 6 years and up



Teens



Adults

Get in the know about nonstimulant

Qelbree[®] ONCE-A-DAY
viloxazine
extended-release capsules
100 mg 150 mg 200 mg

All images in this brochure are actor portrayals.

IMPORTANT SAFETY INFORMATION

Qelbree may increase suicidal thoughts and actions, in children and adults with ADHD, especially within the first few months of treatment or when the dose is changed. Tell your doctor if you or your child have (or if there is a family history of) suicidal thoughts or actions before starting Qelbree. Monitor your or your child's moods, behaviors, thoughts, and feelings during treatment with Qelbree. Report any new or sudden changes in these symptoms right away.

Abbreviation: ADHD, attention-deficit/hyperactivity disorder.

Please see full [Important Safety Information](#) on pages 2 and 3.

INDICATION

Qelbree is a prescription medicine used to treat ADHD in adults and children 6 years and older.

IMPORTANT SAFETY INFORMATION

Qelbree may increase suicidal thoughts and actions, in children and adults with ADHD, especially within the first few months of treatment or when the dose is changed. Tell your doctor if you or your child have (or if there is a family history of) suicidal thoughts or actions before starting Qelbree. Monitor your or your child's moods, behaviors, thoughts, and feelings during treatment with Qelbree. Report any new or sudden changes in these symptoms right away.

You should not take Qelbree if you or your child:

Take a medicine for depression called a monoamine oxidase inhibitor (MAOI) or have stopped taking an MAOI in the past 14 days. Also, you or your child should avoid alosetron, duloxetine, ramelteon, tasimelteon, tizanidine, and theophylline.

Qelbree can increase blood pressure and heart rate. Your or your child's doctor will monitor these vital signs.

Qelbree may cause manic episodes in patients with bipolar disorder.

Tell your doctor if you or your child show any signs of mania.

Do not drive or operate heavy machinery until you know how Qelbree will affect you or your child. Qelbree may cause you or your child to feel sleepy or tired.

The most common side effects of Qelbree in patients 6 to 17 years are sleepiness, not feeling hungry, feeling tired, nausea, vomiting, trouble sleeping, and irritability, and in adults, insomnia, headache, sleepiness, tiredness, nausea, decreased appetite, dry mouth, and constipation. These are not all the possible side effects of Qelbree.

You are encouraged to report negative side effects of prescription drugs to the FDA. Visit www.fda.gov/medwatch or call 1-800-FDA-1088.

Please see [Medication Guide](#), including Boxed Warning.

Abbreviation: FDA, Food and Drug Administration.



For those 6 years and older living with ADHD...
Talk to your healthcare provider about...



Qelbree is an ADHD treatment that can be sampled.



Qelbree is taken once a day, any time of day (either AM or PM).



Qelbree provides full-day medication coverage.



Qelbree can be conveniently refilled without a new prescription each month:



Get up to 90 days of treatment
in a single prescription!



Qelbree is not a stimulant; there is no evidence of abuse.



Download a copay card at
Qelbree.com, or scan here.



Commercially insured patients may pay as little as
\$20 per prescription for a 30-day or 90-day prescription.*

*Terms and conditions apply.

IMPORTANT SAFETY INFORMATION

You should not take Qelbree if you or your child:

Take a medicine for depression called a monoamine oxidase inhibitor (MAOI) or have stopped taking an MAOI in the past 14 days. Also, you or your child should avoid alosetron, duloxetine, ramelteon, tasimelteon, tizanidine, and theophylline.

Please see full [Important Safety Information](#) on pages 2 and 3.

...putting **Qelbree** in the picture



Questions to ask your healthcare provider:

- 1 What is **Qelbree** and how is it different?
- 2 How can **Qelbree** help with all types of ADHD?
- 3 How long does medication coverage with **Qelbree** last?
- 4 What are the common side effects of **Qelbree**?
- 5 When should **Qelbree** be taken?
- 6 How should **Qelbree** be taken?
- 7 What else should I know about **Qelbree**?
- 8 Is there a **Qelbree** savings program?

Qelbree ONCE-A-DAY
viloxazine
extended-release capsules

For those 6 years and older living with ADHD...
Talk to your healthcare provider about...

What is known about how **Qelbree** works?



The way **Qelbree** works is unclear—but is thought to involve its ability to increase the amount of the chemical messenger called norepinephrine in the brain.



IMPORTANT SAFETY INFORMATION

Qelbree can increase blood pressure and heart rate. Your or your child's doctor will monitor these vital signs.

Please see full [Important Safety Information](#) on pages 2 and 3.

...putting the science of **Qelbree**
in the picture



What is known about how **Qelbree** interacts with the body?



The full Prescribing Information for **Qelbree** was revised to include more information about how **Qelbree** interacts with the body.



Qelbree is known to interact with the chemical messengers serotonin (5-HT_{2C}) and norepinephrine.



Qelbree is the only ADHD treatment shown to interact with the serotonin (5-HT_{2C}) chemical messenger.

Science can be complex—so be sure to talk to your healthcare provider if you need help understanding any of this information.

Qelbree ONCE-A-DAY
viloxazine
extended-release capsules

For those 6 years and older living with ADHD...
Talk to your healthcare provider about...

What is Qelbree?



Qelbree is proven to work in medical studies of individuals 6 years and older conducted over 6 or 8 weeks, showing significant reduction in ADHD symptom scores in 4 medical studies of more than 1400 people.



...putting **Qelbree's** demonstrated efficacy profile in the picture



Qelbree has been proven effective in 3 medical studies of children and teens 6 to 17 years of age and 1 medical study of adults diagnosed with ADHD. Some individuals took a single daily dose of Qelbree; others took placebo.



An 18-point rating scale was used in all studies to measure the reduction of symptom scores each individual had from the beginning of the study to the end of the study.



Qelbree met the goal of the 3 medical studies in children and teens—a reduction in ADHD symptom scores in 6 or 8 weeks. For some children, Qelbree reduced ADHD symptom scores as early as week 1.



Qelbree met the goal of the 6-week adult medical study—a significant reduction in ADHD symptom scores at end of study:

- There was a 41% decrease in symptoms from the start of the study, vs treatment with placebo, which resulted in a decrease of 32%
- Qelbree reduced ADHD symptom scores as early as week 2 for some adults

IMPORTANT SAFETY INFORMATION

Qelbree may cause manic episodes in patients with bipolar disorder. Tell your doctor if you or your child show any signs of mania.

Please see full [Important Safety Information](#) on pages 2 and 3.

Qelbree ONCE-A-DAY
viloxazine
extended-release capsules

For those 6 years and older living with ADHD...
Talk to your healthcare provider about...

Is Qelbree safe?



Qelbree has been proven safe* when taken as directed for the treatment of ADHD in 3 medical studies in children and teens 6 to 17 years of age and 1 medical study of adults:



- Only 3% of children or teens taking **Qelbree** discontinued treatment in the medical studies due to side effects vs 1% taking inactive treatment (placebo)
- 9% of adults taking **Qelbree** discontinued the medical study due to side effects vs 5% taking inactive treatment (placebo)

*Important: Monitor yourself or your child for mood or behavior changes. Your or your child's healthcare provider should also monitor for changes in blood pressure and heart rate.



IMPORTANT SAFETY INFORMATION

The most common side effects of **Qelbree** in patients 6 to 17 years are sleepiness, not feeling hungry, feeling tired, nausea, vomiting, trouble sleeping, and irritability, and in adults, insomnia, headache, sleepiness, tiredness, nausea, decreased appetite, dry mouth, and constipation.

Please see full [Important Safety Information](#) on pages 2 and 3.

...putting the established safety* profile
of **Qelbree** in the picture



Qelbree is a nonstimulant, which means it is not a narcotic or a controlled medication:

- There is no evidence of abuse

Qelbree is unlikely to have negative interactions with stimulants, such as methylphenidate or amphetamines.

Qelbree has been studied in breastfeeding women; talk to your doctor to learn more and see if Qelbree might be right for you and your ADHD treatment journey.



Qelbree ONCE-A-DAY
viloxazine
extended-release capsules

For those 6 years and older living with ADHD...
Talk to your healthcare provider about...

How is Qelbree taken?



Qelbree is taken once a day, any time of day (either AM or PM).

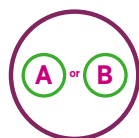
Qelbree offers rapid- and extended-release, full-day medication coverage.



Qelbree is available in 3 easy-to-remember dosage strengths. Your healthcare provider will work with you to find the right strength for you or your child.



Capsules shown are not actual size.



Qelbree can be taken 2 ways:

- The capsule may be swallowed whole. Do not cut, crush, or chew the capsules
- The capsule may be opened and its entire contents sprinkled onto a spoonful of pudding or applesauce. Consume the entire mixture, without chewing, within 15 minutes if mixed with pudding, or within 2 hours if mixed with applesauce; do not store for future use

IMPORTANT SAFETY INFORMATION

Do not drive or operate heavy machinery until you know how Qelbree will affect you or your child. Qelbree may cause you or your child to feel sleepy or tired.

Please see full [Important Safety Information](#) on pages 2 and 3.

...putting the versatility of **Qelbree** in the picture



Qelbree is the only nonstimulant ADHD treatment that can be sprinkled on food to meet the needs of those children, teens, or adults unable to swallow capsules.



Capsule*

OR



Sprinkled on pudding or applesauce*

Capsules shown are not actual size.


*Your healthcare provider will determine the dose based on your or your child's response to medication.



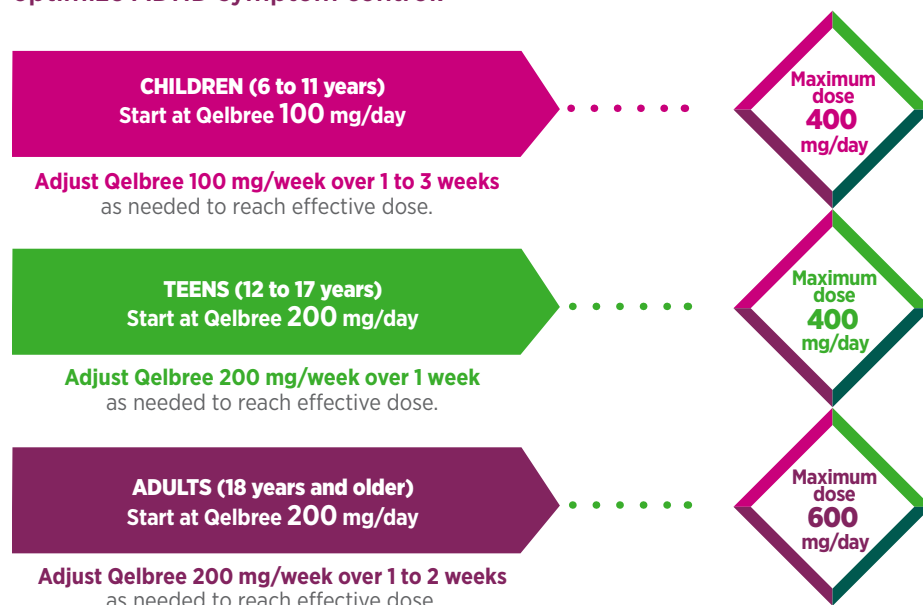
Qelbree ONCE-A-DAY
viloxazine
extended-release capsules

For those 6 years and older living with ADHD...
Talk to your healthcare provider about...

How is Qelbree dosed?

 **Qelbree** is taken once a day, any time of day (either AM or PM).

The dose of Qelbree may be increased weekly as needed to optimize ADHD symptom control.*



*Your healthcare provider will determine the dose based on your or your child's response to medication.

IMPORTANT SAFETY INFORMATION

Severe renal impairment: Initiate Qelbree at 100 mg once daily and increase by 50 mg to 100 mg at weekly intervals to a maximum recommended dosage of 200 mg once daily.

Please see full [Important Safety Information](#) on pages 2 and 3.

...putting the flexible once-a-day dosing of **Qelbree** in the picture



Reaching your or your child's best daily dose of **Qelbree** may be a transition.

Stick with the treatment plan provided by your healthcare provider to ensure you or your child has an opportunity to reach the most effective dose.



Qelbree ONCE-A-DAY
viloxazine
extended-release capsules

For those 6 years and older living with ADHD...
Talk to your healthcare provider about...

Qelbree is a treatment backed by savings and support programs



Qelbree can be conveniently refilled without a new prescription each month.



Download a copay card at **Qelbree.com**, or scan here.



Commercially insured patients may pay as little as \$20 per prescription for a 30- or 90-day prescription.*

*Terms and conditions apply.



Talk to your healthcare provider about requesting a sample of **Qelbree**. You can make this request in person at your healthcare provider's office or during a virtual/telehealth appointment.

IMPORTANT SAFETY INFORMATION

You should not take Qelbree if you or your child:

Take a medicine for depression called a monoamine oxidase inhibitor (MAOI) or have stopped taking an MAOI in the past 14 days. Also, you or your child should avoid alosetron, duloxetine, ramelteon, tasimelteon, tizanidine, and theophylline.

...putting **Qelbree** savings and support in the picture



We're here to support you!

Have a question?

Find a single point of contact with Supernus Support and get help with any of the following:

- Ways to save on **Qelbree**
- Medication access
- Insurance coverage for **Qelbree**



Join Qelbree Insider at **Qelbree.com/sign-up**.

Get exclusive information on savings—and tools to help manage your or your child's ADHD beyond medication.

Connect with the Qelbree community



Qelbree ONCE-A-DAY
viloxazine
extended-release capsules

For those 6 years and older living with ADHD...
Talk to your healthcare provider
about putting **Qelbree** in
the picture!



Qelbree is the only ADHD treatment shown to interact with the serotonin (5-HT_{2C}) chemical messenger.



Qelbree is a once-a-day treatment that offers rapid- and extended-release, full-day medication coverage that can be sprinkled or swallowed whole.



Qelbree is proven in medical studies to effectively and safely* help reduce ADHD symptoms in children 6 years and older, teens, and adults.

*Important: Monitor yourself or your child for mood or behavior changes. Your or your child's healthcare provider should also monitor for changes in blood pressure and heart rate.



Qelbree is not a stimulant; there is no evidence of abuse.



Qelbree can be conveniently prescribed by a healthcare provider via telehealth without the need for a new prescription each month for medication refills:



—Get up to 90 days of treatment
in a single prescription!

IMPORTANT SAFETY INFORMATION

Qelbree may increase suicidal thoughts and actions, in children and adults with ADHD, especially within the first few months of treatment or when the dose is changed. Tell your doctor if you or your child have (or if there is a family history of) suicidal thoughts or actions before starting Qelbree. Monitor your or your child's moods, behaviors, thoughts, and feelings during treatment with Qelbree. Report any new or sudden changes in these symptoms right away.

Please see full [Important Safety Information](#)
on pages 2 and 3.



Qelbree is a registered trademark of Supernus Pharmaceuticals, Inc.
All other trademarks are property of their respective owners.
©2025 Supernus Pharmaceuticals, Inc. All rights reserved. QBE.2025-0251



HIGHLIGHTS OF PRESCRIBING INFORMATION

These highlights do not include all the information needed to use QELBREE® safely and effectively. See full prescribing information for QELBREE®.

QELBREE® (viloxazine extended-release capsules), for oral use
Initial U.S. Approval: 2021

WARNING: SUICIDAL THOUGHTS AND BEHAVIORS

See full prescribing information for complete boxed warning.

In clinical trials, higher rates of suicidal thoughts and behavior were reported in patients treated with Qelbree than in patients treated with placebo. Closely monitor for worsening and emergence of suicidal thoughts and behaviors (5.1).

INDICATIONS AND USAGE

Qelbree is a selective norepinephrine reuptake inhibitor indicated for the treatment of Attention Deficit Hyperactivity Disorder (ADHD) in adults and pediatric patients 6 years and older (1)

DOSAGE AND ADMINISTRATION

- Pediatric patients 6 to 11 years of age:* Recommended starting dosage is 100 mg once daily. May titrate in increments of 100 mg weekly to the maximum recommended dosage of 400 mg once daily (2.2)
- Pediatric patients 12 to 17 years of age:* Recommended starting dosage is 200 mg once daily. May titrate after 1 week, by an increment of 200mg, to the maximum recommended dosage of 400 mg once daily (2.2)
- Adult patients:* Recommended starting dosage is 200 mg once daily. May titrate in increments of 200 mg weekly, to maximum recommended dosage of 600 mg once daily (2.2)
- Capsules may be swallowed whole or opened and the entire contents sprinkled onto applesauce or pudding (2.3)
- Severe Renal Impairment:** Initial dosage is 100 mg once daily. Titrate in weekly increments of 50 mg to 100 mg to a maximum recommended dosage of 200 mg once daily (2.4, 8.6)

DOSAGE FORMS AND STRENGTHS

Extended-release capsules: 100 mg, 150 mg and 200 mg (3)

CONTRAINDICATIONS

- Concomitant administration of monoamine oxidase inhibitors (MAOI), or dosing within 14 days after discontinuing an MAOI (4, 7.1)
- Concomitant administration of sensitive CYP1A2 substrates or CYP1A2 substrates with a narrow therapeutic range (4, 7.1)

WARNINGS AND PRECAUTIONS

- Blood Pressure and Heart Rate Increases:** Assess heart rate and blood pressure prior to initiating treatment, following increases in dosage, and periodically while on therapy (5.2)
- Activation of Mania or Hypomania:** Screen patients for bipolar disorder (5.3)
- Somnolence and Fatigue:** Advise patients to use caution when driving or operating hazardous machinery due to potential somnolence (including sedation and lethargy) and fatigue (5.4)

ADVERSE REACTIONS

Most commonly observed adverse reactions ($\geq 5\%$ and at least twice the rate of placebo) were:

Pediatric patients 6 to 17 years of age: somnolence, decreased appetite, fatigue, nausea, vomiting, insomnia, and irritability (6.1)

Adult patients: insomnia, headache, somnolence, fatigue, nausea, decreased appetite, dry mouth and constipation (6.1)

To report SUSPECTED ADVERSE REACTIONS, contact Supernus Pharmaceuticals at 1-866-398-0833 or FDA at 1-800-FDA-1088 or www.fda.gov/medwatch.

DRUG INTERACTIONS

Moderate sensitive CYP1A2 substrates: Not recommended for coadministration with Qelbree. Dose reduction may be warranted (7.1)

USE IN SPECIFIC POPULATIONS

Pregnancy: May cause maternal harm; discontinue when pregnancy is recognized (8.1)

See 17 for PATIENT COUNSELING INFORMATION and Medication Guide

Revised: 1/2025

FULL PRESCRIBING INFORMATION: CONTENTS*

WARNING: SUICIDAL THOUGHTS AND BEHAVIORS

1 INDICATIONS AND USAGE

2 DOSAGE AND ADMINISTRATION

- Important Considerations Prior to Initiating Treatment
- Recommended Dosage
- Administration Information
- Dosage Recommendations in Patients with Renal Impairment

3 DOSAGE FORMS AND STRENGTHS

4 CONTRAINDICATIONS

5 WARNINGS AND PRECAUTIONS

- Suicidal Thoughts and Behaviors
- Blood Pressure and Heart Rate Increases
- Activation of Mania or Hypomania
- Somnolence and Fatigue

6 ADVERSE REACTIONS

- Clinical Trials Experience

7 DRUG INTERACTIONS

- Drugs Having Clinically Important Interactions with Qelbree

8 USE IN SPECIFIC POPULATIONS

- Pregnancy
- Lactation
- Pediatric Use
- Geriatric Use
- Renal Impairment

10 OVERDOSAGE

11 DESCRIPTION

12 CLINICAL PHARMACOLOGY

- Mechanism of Action
- Pharmacodynamics
- Pharmacokinetics

13 NONCLINICAL TOXICOLOGY

- Carcinogenesis, Mutagenesis, and Impairment of Fertility
- Animal Toxicology and/or Pharmacology

14 CLINICAL STUDIES

16 HOW SUPPLIED/STORAGE AND HANDLING

17 PATIENT COUNSELING INFORMATION

* Sections or subsections omitted from the full prescribing information are not listed.

FULL PRESCRIBING INFORMATION

WARNING: SUICIDAL THOUGHTS AND BEHAVIORS

In clinical studies, higher rates of suicidal thoughts and behavior were reported in patients with ADHD treated with Qelbree than in patients treated with placebo. Closely monitor all Qelbree-treated patients for clinical worsening, and for emergence of suicidal thoughts and behaviors [see Warnings and Precautions (5.1)].

1 INDICATIONS AND USAGE

Qelbree is indicated for the treatment of Attention-Deficit Hyperactivity Disorder (ADHD) in adults and pediatric patients 6 years and older.

2 DOSAGE AND ADMINISTRATION

2.1 Important Considerations Prior to Initiating Treatment

- Assess heart rate and blood pressure prior to initiating treatment with Qelbree, following increases in dosage, and periodically while on therapy [see Warnings and Precautions (5.2)].
- Prior to initiating treatment with Qelbree, screen patients for a personal or family history of suicide, bipolar disorder, and depression [see Warnings and Precautions (5.3)].

2.2 Recommended Dosage

Pediatric patients

The recommended starting dosage for pediatric patients 6 to 11 years of age is 100 mg orally once daily. Dosage may be titrated in increments of 100 mg at weekly intervals to the maximum recommended dosage of 400 mg once daily, depending on response and tolerability.

The recommended starting dosage for pediatric patients 12 to 17 years of age is 200 mg orally once daily. After 1 week, dosage may be titrated by an increment of 200 mg to the maximum recommended dosage of 400 mg once daily, depending on response and tolerability.

Adult patients

The recommended starting dosage for adults is 200 mg orally once daily. Dosage may be titrated in increments of 200 mg weekly to the maximum recommended dosage of 600 mg once daily, depending on response and tolerability.

Pharmacological treatment of ADHD may be needed for extended periods. Periodically reevaluate the long-term use of Qelbree and adjust dosage as needed.

2.3 Administration Information

Administer Qelbree orally with or without food [see Clinical Pharmacology (12.3)]. Do not cut, crush, or chew the capsules.

Swallow Qelbree capsules whole, or open the capsule and sprinkle the entire contents over a teaspoonful or tablespoonful of pudding or applesauce. Consume the food mixture in its entirety, without chewing, within 15 minutes for pudding, or within 2 hours for applesauce; do not store for future use.

2.4 Dosage Recommendations in Patients with Renal Impairment

In patients with severe renal impairment ($\text{eGFR} < 30 \text{ mL/min/1.73m}^2$), the recommended starting dosage is 100 mg once daily. Dosage may be titrated in weekly increments of 50 to 100 mg once daily, to a maximum recommended dosage of 200 mg once daily.

No dosage adjustment is recommended in patients with mild to moderate (eGFR of 30 to $89 \text{ mL/min/1.73m}^2$) renal impairment [see Use in Specific Populations (8.6)].

3 DOSAGE FORMS AND STRENGTHS

Qelbree (viloxazine extended-release capsules) are available as:

- 100 mg: yellow opaque body and cap (printed "SPN" on the cap, "100" on the body)
- 150 mg: lavender opaque body and cap (printed "SPN" on the cap, "150" on the body)
- 200 mg: light green opaque body and cap (printed "SPN" on the cap, "200" on the body)

4 CONTRAINDICATIONS

Qelbree is contraindicated in patients:

- receiving concomitant treatment with monoamine oxidase inhibitors (MAOI), or within 14 days following discontinuing an MAOI, because of an increased risk of hypertensive crisis [see Drug Interactions (7.1)].
- receiving concomitant administration of sensitive CYP1A2 substrates or CYP1A2 substrates with a narrow therapeutic range [see Drug Interactions (7.1)].

5 WARNINGS AND PRECAUTIONS

5.1 Suicidal Thoughts and Behaviors

Higher rates of suicidal thoughts and behaviors were reported in pediatric and adult patients with ADHD treated with Qelbree than in patients treated with placebo.

Among 1019 pediatric patients exposed to Qelbree 100 mg to 400 mg in short-term trials, a total of nine patients (0.9%) reported suicidal ideation (N=6), behavior (N=1) or both (N=2). Eight patients reported suicidal ideation or behavior on the Columbia Suicide Severity Rating Scale (C-SSRS), a validated scale that assesses suicide risk. An additional patient treated with Qelbree reported suicidal behavior during the clinical trials, but did not report it on the C-SSRS. Among 463 patients treated with placebo in these studies, two patients (0.4%) reported suicidal ideation on the C-SSRS. No patients treated with placebo reported suicidal behavior. No completed suicides occurred in these trials.

Among 189 adults treated with Qelbree, a total of three patients (1.6%) reported suicidal ideation on the C-SSRS, versus 0 of 183 adults treated with placebo. No adults treated with either Qelbree or placebo reported suicidal behavior on the C-SSRS in the study. No attempted or completed suicides occurred in the trial.

Patients treated with Qelbree had higher rates of insomnia and irritability [see Adverse Reactions (6.1)]. Although a causal link between the emergence of insomnia and irritability and the emergence of suicidal impulses has not been established, there is a concern that these and other symptoms such as depressed mood, anxiety, agitation, akathisia, mania, hypomania, panic attacks, impulsive behavior, and aggression may represent precursors to emerging suicidal ideation or behavior. Thus, patients being treated with Qelbree should be observed for the emergence of precursor symptoms.

Closely monitor all Qelbree-treated patients for clinical worsening and emergence of suicidal thoughts and behaviors, especially during the initial few months of drug therapy, and at times of dosage changes. Consider changing the therapeutic regimen, including possibly discontinuing Qelbree, in patients who are experiencing emergent suicidal thoughts and behaviors or symptoms that might be precursors to emerging suicidal ideation or behavior, especially if these symptoms are severe or abrupt in onset, or were not part of the patient's presenting symptoms. Advise family members or caregivers of patients to monitor for the emergence of suicidal ideation or behavior, and to report such symptoms immediately to the healthcare provider.

5.2 Blood Pressure and Heart Rate Increases

Qelbree can cause an increase in heart rate and diastolic blood pressure.

Pediatric Patients

In a clinical study in pediatric patients 6 to 11 years of age, 34/154 (22%) of patients treated with Qelbree 100 mg daily had a ≥ 20 beat per minute (bpm) increase in heart rate at any time point in the clinical trial, compared to 15/159 (9%) of patients who received placebo. This finding was observed in 84/268 (31%) who received the 200 mg daily dosage, compared to 39/262 (15%) of patients in the placebo group, and in 28/100 (28%) of patients who received the 400 mg daily dosage, compared to 24/103 (23%) of patients who received placebo.

In a clinical study in pediatric patients 12 to 17 years of age, 22/99 (22%) of patients treated with Qelbree 200 mg daily had a ≥ 20 bpm increase in heart rate at any time point in the clinical trial, compared to 15/104 (14%) of patients who received placebo. This finding was observed in 69/205 (34%) who received the 400 mg daily dosage, compared to 35/201 (17%) of patients in the placebo group. In pediatric patients 12 to 17 years of age, 52/205 (25%) of patients treated with Qelbree 400 mg daily had a ≥ 15 mmHg increase in diastolic blood pressure at any time in the clinical trial, compared to 26/201 (13%) of patients in the placebo group.

Adult Patients

In a clinical study in adult patients (18 to 60 years of age), 52/178 (29%) of patients treated daily with Qelbree (200 mg to 600 mg) had a ≥ 20 beat per minute (bpm) increase in heart rate at any time point in the clinical trial, compared to 23/181 (13%) of patients who received placebo. Of patients treated daily with Qelbree (200 to 600 mg), 23/178 (13%) had a ≥ 15 mmHg increase in diastolic blood pressure at any time in the clinical trial, compared to 16/181 (9%) of patients in the placebo group.

Assess heart rate and blood pressure prior to initiating treatment with Qelbree, following increases in dosage, and periodically while on therapy [see Dosage and Administration (2.1)].

5.3 Activation of Mania or Hypomania

Noradrenergic drugs, such as Qelbree, may induce a manic or mixed episode in patients with bipolar disorder. Prior to initiating treatment with Qelbree, screen patients to determine if they are at risk for bipolar disorder; such screening should include a detailed psychiatric history, including a personal or family history of suicide, bipolar disorder, and depression [see Dosage and Administration (2.1)].

5.4 Somnolence and Fatigue

Qelbree can cause somnolence and fatigue. In the short-term, placebo-controlled clinical trials in pediatric patients (6 to 17 years) with ADHD, somnolence (including lethargy and sedation) was reported in 16% of Qelbree-treated patients compared to 4% of placebo-treated patients. Fatigue was reported in 6% of Qelbree-treated patients, compared to 2% of placebo-treated patients [see Adverse Reactions (6.1)]. In adults, somnolence was reported in 6% of Qelbree-treated patients versus 2% in placebo-treated patients. Fatigue was reported in 12% of Qelbree-treated patients versus 3% of placebo-treated patients.

Patients should not perform activities requiring mental alertness, such as operating a motor vehicle or operating hazardous machinery until they know how they will be affected by Qelbree.

6 ADVERSE REACTIONS

The following serious adverse reactions are described in other sections of the labeling:

- Suicidal Thoughts and Behaviors [see Warnings and Precautions (5.1)]
- Blood Pressure and Heart Rate Increases [see Warnings and Precautions (5.2)]
- Activation of Mania or Hypomania [see Warnings and Precautions (5.3)]
- Somnolence and Fatigue [see Warnings and Precautions (5.4)]

6.1 Clinical Trials Experience

Because clinical trials are conducted under widely varying conditions, adverse reaction rates observed in the clinical trials of a drug cannot be directly compared to rates in the clinical trials of another drug and may not reflect the rates observed in practice.

The safety of Qelbree has been evaluated in 1118 pediatric patients (6 to 17 years of age) with ADHD exposed to one or more doses in short-term (6 to 8 week), randomized, double-blind, placebo-controlled trials. A total of 682 pediatric patients 6 to 17 years of age were treated for at least 6 months, and 347 pediatric patients 6 to 17 years of age for at least 12 months with Qelbree.

The safety of Qelbree has been evaluated in 189 adult patients (18 to 60 years of age) with ADHD exposed to one or more doses in a short-term (6 week), randomized, double-blind, placebo-controlled trial. A total of 277 adult patients with ADHD have been exposed to one or more doses of Qelbree. Eighty-four adult patients were treated for at least 6 months, and 22 adult patients for at least 12 months.

Pediatric Patients (6 to 17 Years of Age)

The data described below reflect exposure to Qelbree in 826 pediatric patients (6 to 17 years) who participated in randomized, double-blind, placebo-controlled trials with doses ranging from 100 mg to 400 mg. The population (N=826) was 65% male, 35% female, 54% White, 41% Black, 4% multiracial, and 1% other races.

Adverse Reactions Leading to Discontinuation of Qelbree Treatment: Approximately 3% (n=27) of the 826 patients receiving Qelbree in clinical studies discontinued treatment due to an adverse reaction. The adverse reactions most commonly associated with discontinuation of Qelbree were somnolence (n=5), nausea (n=3), headache (n=2), irritability (n=2), tachycardia (n=2), fatigue (n=2), and decreased appetite (n=2).

Most Common Adverse Reactions (occurring at ≥5% and at least twice the placebo rate for any dose): somnolence, decreased appetite, fatigue, nausea, vomiting, insomnia, and irritability.

Table 1 lists adverse reactions that occurred in at least 2% of patients treated with Qelbree and more frequently in Qelbree-treated patients than in placebo-treated patients. Table 1 data represents pooled data from pediatric patients 6 to 17 years of age who were enrolled in randomized, placebo-controlled trials of Qelbree.

Table 1. Adverse Reactions Reported in ≥2% of Pediatric Patients (6 to 17 Years of Age) Treated with Qelbree and at a Rate Greater than Placebo-Treated Patients in Placebo-Controlled ADHD Studies

Body System Adverse Reaction	Placebo N=463 (%)	Qelbree			
		100mg N=154 (%)	200mg N=367 (%)	400mg N=305 (%)	All Qelbree N=826 (%)
Nervous system disorders					
Somnolence*	4	12	16	19	16
Headache*	7	10	11	11	11
Metabolic and nutritional disorders					
Decreased appetite	0.4	5	8	8	7
Infections and infestations					
Upper respiratory tract infection*	6	5	7	8	7
Body as a Whole - General disorders					
Fatigue	2	4	5	9	6
Pyrexia	0.2	3	2	1	2
Gastrointestinal system disorders					
Abdominal Pain*	4	3	6	7	5
Nausea	3	1	4	7	5
Vomiting	2	5	3	6	4
Psychiatric disorders					
Insomnia*	1	2	5	5	4
Irritability	1	3	2	5	3

* The following terms were combined:
Somnolence: somnolence, lethargy, sedation
Headache: headache, migraine, migraine with aura, tension headache
Upper respiratory tract infection: nasopharyngitis, pharyngitis, sinusitis, upper respiratory tract infection, viral sinusitis, viral upper respiratory tract infection
Abdominal pain: abdominal discomfort, abdominal pain, abdominal pain lower, abdominal pain upper
Insomnia: initial insomnia, insomnia, middle insomnia, poor quality sleep, sleep disorder, terminal insomnia

Effects on Weight: In short-term, controlled studies (6 to 8 weeks), Qelbree-treated patients 6 to 11 years of age gained an average of 0.2 kg, compared to a gain of 1 kg in same-aged patients who received placebo. Qelbree-treated patients 12 to 17 years of age lost an average of 0.2 kg, compared to a weight gain of 1.5 kg in same-aged patients who received placebo. In a long-term open-label extension safety trial, 1097 patients received at least 1 dose of Qelbree. Among the 338 patients evaluated at 12 months, the mean change from baseline in weight-for-age z-score was -0.2 (standard deviation of 0.5). In the absence of a control group, it is unclear whether the weight change observed in the long-term open-label extension was attributable to the effect of Qelbree.

Adults

The data described below reflect exposure to Qelbree in 189 adults with ADHD who participated in the flexible-dose, randomized, double-blind, placebo-controlled trial with doses ranging from 200 mg to 600 mg. The population (N=189) was 56% male, 44% female, 81% White, 12% Black, 3% Asian, 3% other races and 1% multiracial.

Adverse Reactions Leading to Discontinuation of Qelbree Treatment: Approximately 9% of the 189 patients receiving Qelbree in clinical studies discontinued treatment due to an adverse reaction. The adverse reactions most commonly associated with discontinuation of Qelbree were fatigue (n=4), insomnia (n=3), constipation (n=3), and headache (n=2).

Most Common Adverse Reactions (occurring at ≥5% and at least twice the placebo rate of Qelbree): insomnia, headache, somnolence, fatigue, nausea, decreased appetite, dry mouth, and constipation.

Table 2 lists adverse reactions that occurred in at least 2% of patients treated with Qelbree and more frequently in Qelbree-treated patients than in placebo-treated patients. Table 2 represents data from adults with ADHD who were enrolled in a flexible-dose, randomized, placebo-controlled trial of Qelbree at doses of 200 mg to 600 mg.

Table 2. Adverse Reactions Reported in ≥2% of Adults Treated with Qelbree and at a Rate Greater than Placebo-Treated Patients in a Flexible-Dose Placebo-Controlled ADHD Study

Body System Adverse Reaction	Placebo N=183 (%)	Qelbree (200 mg to 600 mg) N=189 (%)
Psychiatric disorders		
Insomnia *	7	23
Irritability	3	4
Nervous system disorders		
Headache *	7	17
Somnolence *	2	6
Dizziness	2	4
Gastrointestinal system disorders		
Nausea	3	12
Dry mouth	2	10
Constipation	1	6
Vomiting	1	4
Gastroesophageal reflux disease	1	2
Body as a Whole - General disorders		
Fatigue	3	12
Metabolic and nutritional disorders		
Decreased appetite	3	10
Cardiac Disorders		
Tachycardia	1	4

* The following terms were combined:
Somnolence: somnolence, lethargy, sedation
Headache: headache, migraine, migraine with aura, tension headache
Insomnia: initial insomnia, insomnia, middle insomnia, poor quality sleep, sleep disorder, terminal insomnia

7 DRUG INTERACTIONS

7.1 Drugs Having Clinically Important Interactions with Qelbree

Table 3: Clinically Important Drug Interactions with Qelbree

Monoamine Oxidase Inhibitors (MAOI)	
Clinical Impact	Concomitant use of Qelbree with an MAOI may lead to a potentially life-threatening hypertensive crisis.
Intervention	Concomitant use of Qelbree with an MAOI or within 2 weeks after discontinuing an MAOI is contraindicated [see Contraindications (4)].
Sensitive CYP1A2 Substrates or CYP1A2 Substrates with a Narrow Therapeutic Range	
Clinical Impact	Viloxazine is a strong CYP1A2 inhibitor. Concomitant use of viloxazine significantly increases the total exposure, but not peak exposure, of sensitive CYP1A2 substrates [see Clinical Pharmacology (12.3)], which may increase the risk of adverse reactions associated with these CYP1A2 substrates.
Intervention	Coadministration with Qelbree is contraindicated [see Contraindications (4)].

Table 3: Clinically Important Interactions with Qelbree (cont'd)

Moderate Sensitive CYP1A2 Substrate	
Clinical Impact	Viloxazine is a strong CYP1A2 inhibitor. Concomitant use of viloxazine significantly increases the total, but not peak, exposure of sensitive CYP1A2 substrates [see Clinical Pharmacology (12.3)], which may increase the risk of adverse reactions associated with these CYP1A2 substrates.
Intervention	Not recommended for coadministration with Qelbree. Dose reduction may be warranted if coadministered.
CYP2D6 Substrates	
Clinical Impact	Viloxazine is a weak inhibitor of CYP2D6, and increases the exposure of CYP2D6 substrates when coadministered [see Clinical Pharmacology (12.3)].
Intervention	Monitor patients for adverse reactions and adjust dosages of CYP2D6 substrates, as clinically indicated.
CYP3A4 Substrates	
Clinical Impact	Viloxazine is a weak inhibitor of CYP3A4 which increases the exposure of CYP3A4 substrates when coadministered [see Clinical Pharmacology (12.3)].
Intervention	Monitor patients for adverse reactions and adjust dosages of CYP3A4 substrates, as clinically indicated.

8 USE IN SPECIFIC POPULATIONS

8.1 Pregnancy

Pregnancy Exposure Registry

There is a pregnancy exposure registry that monitors pregnancy outcomes in women exposed Qelbree during pregnancy. Healthcare providers are encouraged to register patients by calling the National Pregnancy Registry for Psychiatric Medications at 1-866-961-2388 or visiting online at www.womensmentalhealth.org/preg.

Risk Summary

Based on findings from animal reproduction studies, viloxazine may cause maternal harm when used during pregnancy. Discontinue Qelbree when pregnancy is recognized unless the benefits of therapy outweigh the potential risk to the mother. Available data from case series with viloxazine use in pregnant women are insufficient to determine a drug-associated risk of major birth defects, miscarriage or adverse maternal outcomes.

In animal reproduction studies, oral administration of viloxazine during the period of organogenesis caused fetal toxicities and delayed fetal development in the rat and maternal toxicities in the rabbit at doses approximately equal to the maximum recommended human dose (MRHD) of 600 mg in adults, based on mg/m². Oral administration of viloxazine to pregnant rats and mice during pregnancy and lactation caused maternal toxicities and deaths and fetal toxicities at doses equal to or less than the MRHD of 600 mg in adults, based on mg/m², respectively (see Data).

The estimated background risk of major birth defects and miscarriage for the indicated population is unknown. All pregnancies have a background risk of birth defect, loss, or other adverse outcomes. In the U.S. general population, the estimated background risk of major birth defects and miscarriage in clinically recognized pregnancies is 2 to 4% and 15 to 20%, respectively.

Data

Animal Data

Viloxazine was administered orally to pregnant rats during the period of organogenesis at doses of 13, 33, and 82 mg/kg/day. The high dose is approximately equal to the MRHD of 600 mg in adults, based on mg/m². Viloxazine did not cause maternal toxicity up to the high dose. Viloxazine at the high dose increased early and late resorption, delayed fetal development, and possibly caused low incidences of fetal malformations or anomalies (craniorachischisis, missing cervical vertebrae, and morphological changes associated with hydranencephaly). The NOAEL for fetal toxicity and malformation is 33 mg/kg/day, which is less than the MRHD of 600 mg in adults, based on mg/m².

Viloxazine was administered orally to pregnant rabbits during the period of organogenesis at doses of 43, 87, and 130 mg/kg/day, which are approximately 1, 3, and 4 times the MRHD of 600 mg in adults, based on mg/m², respectively. Viloxazine decreased maternal body weight, weight gain, or food consumption at doses ≥ 87 mg/kg/day but did not cause fetal toxicity at doses up to 130 mg/kg/day. The NOAELs for maternal and fetal toxicity is 43 and 130 mg/kg/day, respectively, which is approximately 1 and 4 times the MRHD, based on mg/m², respectively.

Viloxazine was administered orally to pregnant rats during gestation and lactation at doses of 43, 87, and 217 mg/kg/day, which are less than, equal to, and 4 times the MRHD of 600 mg in adults, based on mg/m², respectively. Viloxazine caused maternal toxicity of decreased body weight, weight gain, and food consumption at doses ≥ 87 mg/kg/day and maternal deaths near term at 217 mg/kg/day. At these maternally toxic doses, viloxazine caused lower live birth, decreased viability, and delayed growth and sexual maturation without affecting learning and memory in the offspring. The NOAEL for maternal and developmental toxicity is 43 mg/kg/day, which is less than the MRHD of 600 mg in adults, based on mg/m².

Viloxazine was administered orally to pregnant mice during gestation and lactation at doses of 13, 33, and 82 mg/kg/day, which are less than the MRHD of 600 mg in adults, based on mg/m². Viloxazine treatment at 82 mg/kg/day during the gestation period caused maternal deaths and decreased body weight in the offspring. The NOAEL for both maternal and developmental toxicity is 33 mg/kg/day, which is less than the MRHD of 600 mg in adults, based on mg/m².

8.2 Lactation

Risk Summary

Available data from a lactation study in 15 women indicate that viloxazine and its metabolite, 5-HVLX-gluc, are present in breastmilk. The estimated daily infant dose of viloxazine and 5-HVLX-gluc is 0.085 mg/kg and 0.00595 mg/kg (using a nominal infant body weight of 6 kg), respectively, and the relative infant dose (RID) is approximately 1% and 0.07%, respectively, the weight-normalized maternal daily dose (8.58 mg/kg) of viloxazine. These data support that transfer of viloxazine into breastmilk is low (see Data). There are no data on the effects of viloxazine on the breastfed infant or the effects on milk production.

The developmental and health benefits of breastfeeding should be considered along with the mother's clinical need for Qelbree and any potential adverse effects on the breastfed child from Qelbree or from the underlying maternal condition.

Data

A multi-dose (600 mg daily for three days) milk and plasma lactation study was conducted in 15 healthy lactating women. The geometric mean of the total excreted amounts of viloxazine and 5-HVLX-gluc in breast milk over a period of 24 hours at steady-state were 0.511 mg and 0.0357 mg, respectively. The RID of viloxazine and 5-HVLX-gluc were approximately 1% and 0.07%, respectively, of the weight-normalized maternal daily dose (8.58 mg/kg) of viloxazine.

8.4 Pediatric Use

The safety and effectiveness of Qelbree in pediatric patients 6 to 17 years of age with ADHD have been established based on randomized, placebo-controlled studies in pediatric patients [see Adverse Reactions (6.1) and Clinical Studies (14)].

The safety and effectiveness of Qelbree have not been established in pediatric patients younger than 6 years old.

Patients treated with Qelbree should be monitored for suicidal thoughts and behavior [see Warnings and Precautions (5.1)], and for changes in weight [see Adverse Reactions (6.1)].

Juvenile Animal Toxicity Data

Viloxazine was administered orally to juvenile rats from postnatal day (PND) 23 through PND 79 at doses of 43, 130, and 217 mg/kg/day, which are approximately 1, 2, and 3 times the MRHD of 400 mg in children, based on mg/m², respectively. Viloxazine decreased body weight, weight gain, and food consumption in both sexes at 217 mg/kg/day. Sexual maturation, reproductive capacity, and learning and memory were not affected. The NOAEL for juvenile toxicity is 130 mg/kg/day, which is approximately 2 times the MRHD of 400 mg in children, based on mg/m².

8.5 Geriatric Use

Clinical trials of Qelbree in the treatment of ADHD did not include sufficient numbers of patients aged 65 and older to determine whether or not they respond differently from younger patients.

8.6 Renal Impairment

Dosage reduction is recommended in patients with severe (eGFR of < 30 mL/min/1.73m² [MDRD]) renal impairment [see Dosage and Administration (2.4)].

No dosage adjustment of Qelbree is recommended in patients with mild to moderate (eGFR of 30 to 89 mL/min/1.73m² [MDRD]) renal impairment.

The exposure of viloxazine increases in patients with renal impairment [see Clinical Pharmacology (12.3)].

10 OVERDOSAGE

Human Experience

The pre-market clinical trials with Qelbree do not provide information regarding symptoms of overdose.

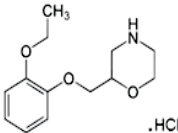
Literature reports from post marketing experience with immediate-release viloxazine include cases of overdose from 1000 mg to 6500 mg (1.7 to 10.8 times the maximum recommended daily dose). The most reported symptom was drowsiness. Impaired consciousness, diminished reflexes, and increased heart rate have also been reported.

Treatment and Management

There is no specific antidote for Qelbree overdose. Administer symptomatic and supportive treatment as appropriate. In case of overdose, consult a Certified Poison Control Center (1-800-222-1222 or www.poison.org).

11 DESCRIPTION

Qelbree contains viloxazine, a selective norepinephrine reuptake inhibitor, in the form of viloxazine hydrochloride which is (±)-2-[(2-ethoxyphenoxy)methyl]morpholine hydrochloride. The molecular formula is C₁₃H₂₀NO₃Cl and its molecular weight is 273.8 (HCl salt) with the following structural formula:



Viloxazine hydrochloride is a white to off-white powder. Viloxazine hydrochloride is soluble in water, 0.1N HCl and aqueous solutions of pH 9.5 and lower. Viloxazine hydrochloride is sparingly soluble in methanol, very slightly soluble in acetonitrile, acetic acid and isopropyl alcohol, and practically insoluble in ethyl acetate.

Qelbree extended-release capsules are intended for oral administration. Each extended-release capsule contains 100 mg, 150 mg, and 200 mg of viloxazine free base equivalent to 115mg, 173mg, and 231mg, respectively, of viloxazine hydrochloride salt.

The inactive ingredients are: Ammonium hydroxide, black iron oxide, butyl alcohol, corn starch, ethylcellulose, FD&C Blue #1, FD&C Red #28, FD&C Yellow #5, FD&C Yellow #6, FD&C Yellow #10, gelatin, hypromellose, isopropyl alcohol, lactose monohydrate, medium chain triglycerides, oleic acid, polyethylene glycol, potassium hydroxide, propylene glycol, shellac, strong ammonia solution, sucrose, talc, triacetin, titanium dioxide.

12 CLINICAL PHARMACOLOGY

12.1 Mechanism of Action

The mechanism of action of viloxazine in the treatment of ADHD is unclear; however, it is thought to be through inhibiting the reuptake of norepinephrine.

12.2 Pharmacodynamics

Viloxazine binds to and inhibits the norepinephrine transporter (Ki=0.13 μM). In addition, viloxazine binds to and exhibits partial agonist activity at the serotonin 5-HT_{2C} receptor (Ki=0.66 μM).

Cardiac Electrophysiology

At a dose 3 times the maximum recommended dose, Qelbree did not prolong the QT interval to any clinically relevant extent. There was no effect of Qelbree on the PR interval or QRS duration in healthy volunteers. However, nonclinical studies suggest the potential for Qelbree to inhibit cardiac sodium channels.

12.3 Pharmacokinetics

Viloxazine C_{max} and AUC increase proportionally over a dosage range from 100 mg to 600 mg once daily. Steady-state was reached after two days of once-daily administration, and no accumulation was observed.

Absorption

The relative bioavailability of viloxazine extended-release relative to an immediate-release formulation was about 88%. The median (range) time to peak plasma concentration of viloxazine (T_{max}) was approximately 5 hours, with a range of 3 to 9 hours, following a single 200 mg dose.

Effect of Food

Administration of 200 mg viloxazine extended-release with a high-fat meal (800 to 1000 calories) decreased viloxazine C_{max} and AUC by about 9% and 8%, respectively. Viloxazine T_{max} increased by about 2 hours after administration with a high-fat meal. Sprinkling the contents of a capsule on applesauce decreased viloxazine C_{max} and AUC by about 10% and 5%, respectively.

Distribution

Viloxazine is 76-82% bound to human plasma proteins over the blood concentration range of 0.5 mcg/mL to 10 mcg/mL.

Elimination

The mean (± SD) half-life of viloxazine was 7.02 ± (4.74 hours).

Metabolism

Viloxazine is primarily metabolized by CYP2D6, UGT1A9, and UGT2B15. The major metabolite detected in plasma is 5-hydroxy-viloxazine glucuronide.

Excretion

Renal excretion is the primary route of excretion of viloxazine. After administration of radiolabeled viloxazine, 90% of the dose was recovered in urine within the first 24 hours post-dose. Less than 1% of the dose is excreted in the feces.

Specific Populations

Geriatric Patients

No studies were conducted to evaluate pharmacokinetics in the geriatric population.

Pediatric Patients

The estimated steady-state C_{max} and AUC₀₋₁ of viloxazine and its major metabolite, at doses ranging from 200 mg to 400 mg, was approximately 130-250% and 60-140% higher in pediatric patients 6 to 11 and 12 to 17 years of age, respectively, compared to adults.

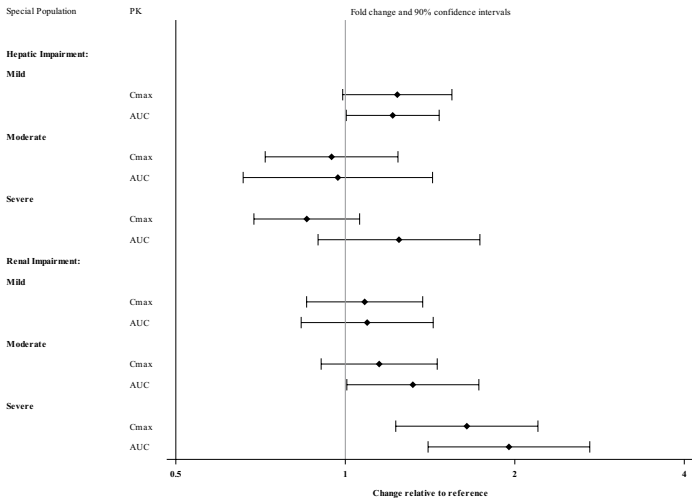
Male or Female Patients and Racial or Ethnic Groups

No clinically significant differences in the pharmacokinetics of viloxazine was observed based on race and sex.

Patients with Hepatic and Renal Impairment

Exposures of viloxazine in patients with hepatic and renal impairment are summarized in Figure 1 [see Dosage and Administration (2.4) and Use in Specific Populations (8.6)]

Figure 1: Effect of Hepatic and Renal Impairment on Viloxazine Pharmacokinetics



CYP2D6 Metabolism

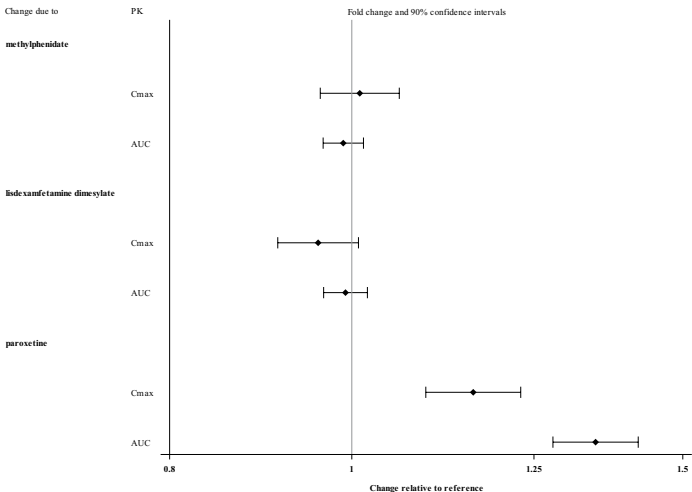
A multiple-dose study was conducted with Qelbree 900 mg once-daily in healthy volunteers to compare the effect of CYP2D6 poor metabolizers (PMs) and extensive metabolizers (EMs) on the PK of viloxazine. At steady state, viloxazine geometric means for C_{max} and AUC₀₋₂₄ were 21% and 26%, respectively, higher in CYP2D6 PMs compared to EMs.

Drug Interaction Studies

Alcohol: There was no significant effect on viloxazine C_{max} and AUC when 200 mg viloxazine ER was administered with orange juice containing 4% and 20% alcohol. However, when administered with orange juice containing 40% alcohol, C_{max} and AUC of viloxazine decreased by about 32% and 19%, respectively.

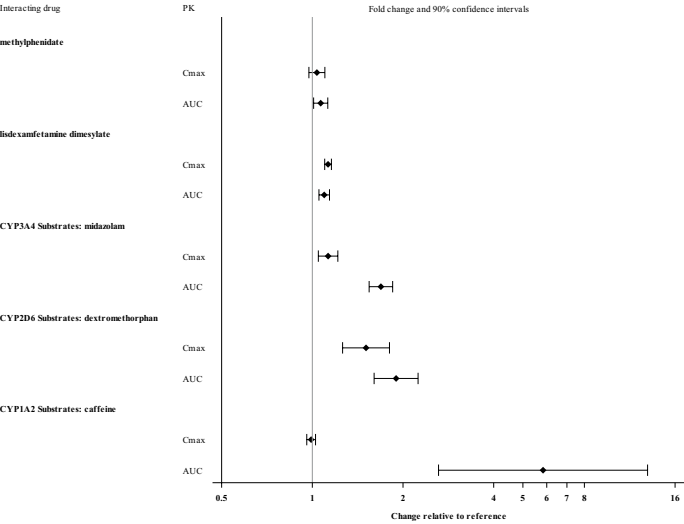
The effect of other drugs on the pharmacokinetics of viloxazine is presented in Figure 2.

Figure 2: Effects of Other Drugs on Viloxazine Pharmacokinetics



The effect of viloxazine on the pharmacokinetics of other drugs is presented in Figure 3 [see Drug Interactions (7.1)].

Figure 3: Effect of Viloxazine on the Pharmacokinetics of Other Drugs



In Vitro Studies

Based on *in vitro* data, drugs that inhibit CYP isozymes, 1A2, 2B6, 2D6, 2C8, 2C9, 2C19, 2E1 and 3A4 are not expected to have significant impact on the pharmacokinetic profile of viloxazine.

Viloxazine does not inhibit CYP2C8, 2C9 or 2C19 activities. Viloxazine is a reversible inhibitor of P450-1A2, 2B6, 2D6 and 3A4/5. Viloxazine is a potential inducer of CYP1A2 and CYP2B6.

Viloxazine is not an inhibitor of P-gp, BCRP, MATE2-K, OATP1B1*1a, and OATP1B3 transporters. Viloxazine appears to be a weak inhibitor of the MATE1. Viloxazine is not a substrate of either OATP1B1*1a or OATP1B3 transporters.

13 NONCLINICAL TOXICOLOGY

13.1 Carcinogenesis, Mutagenesis, and Impairment of Fertility

Carcinogenesis

Viloxazine did not increase the incidence of tumors in rats treated for 2 years at oral doses of 22, 43, and 87 mg/kg/day. The high dose of 87 mg/kg/day is approximately equal to the MRHD of 600 mg in adults, based on mg/m².

Viloxazine did not increase the incidence of tumors in Tg.rasH2 mice treated for 26 weeks at oral doses of 4.3, 13, and 43 mg/kg/day.

Mutagenesis

Viloxazine was not genotoxic in a battery of genotoxicity tests. It was not mutagenic in the *in vitro* bacterial reverse mutation (Ames) assay or clastogenic in the *in vitro* mammalian chromosomal aberration assay or in the *in vivo* rat bone marrow micronucleus assay.

Impairment of Fertility

Viloxazine was orally administered to male and female rats prior to and throughout mating and continued until completion of the second littering at doses of 13, 33, and 82 mg/kg/day. Viloxazine did not affect male or female fertility parameters. The NOAEL for male and female fertility is 82 mg/kg/day, which is approximately equal to the MRHD of 600 mg in adults, based on mg/m².

13.2 Animal Toxicology and/or Pharmacology

In animal studies, viloxazine treatment caused dose-dependent convulsions at oral doses of ≥ 130, ≥ 173, and ≥ 39 mg/kg/day in the rat, mouse, and dog, respectively, which are approximately equal to or slightly higher than the MRHD of 600 mg in adults, based on mg/m².

14 CLINICAL STUDIES

ADHD Studies in Pediatric Patients

The efficacy of Qelbree in the treatment of ADHD in pediatric patients 6 to 17 years of age was evaluated in three short-term, randomized, placebo-controlled monotherapy trials (Studies 1, 2, and 3).

Study 1 (NCT03247530) was a multicenter, randomized, double-blind, three-arm placebo-controlled, parallel group monotherapy trial in patients 6 to 11 years of age with ADHD. Total duration of treatment was 6 weeks, including a 1-week titration period (starting at 100 mg once daily) and 5-week maintenance phase. Patients were randomized to receive 100 mg, 200 mg, or placebo, given once daily as a single dose. The primary endpoint was the change from baseline to the end of study on the total score on the ADHD Rating Scale (ADHD-RS-5), an 18-question scale that assesses hyperactivity, impulsivity, and inattentive symptoms. Higher ADHD-RS-5 scores reflect more severe symptoms. The Clinical Global Impression-Improvement (CGI-I) score at the end of the study was a secondary endpoint.

A total of 477 patients were randomized in Study 1; 399 completed the study, and 78 discontinued. The change from baseline (reduction) in ADHD-RS-5 total score was statistically significantly greater in patients treated with Qelbree 100 mg or with Qelbree 200 mg than in patients on placebo (see Table 4). Compared with patients on placebo, a statistically significantly greater reduction (improvement) in CGI-I score at the end of the study was observed both in patients treated with Qelbree 100 mg and in patients treated with Qelbree 200 mg.

Study 2 (NCT03247543) was a multicenter, randomized, double-blind, three-arm, placebo-controlled, parallel-group monotherapy trial in patients 6 to 11 years of age with ADHD. Total duration of treatment was 8 weeks, including a 3-week titration period (starting at 100 mg once daily), and a 5-week maintenance phase. Patients were randomized to receive Qelbree 200 mg, Qelbree 400 mg, or placebo, given once daily as a single dose. The primary endpoint was the change from baseline to the end of study on the total score on the ADHD Rating Scale (ADHD-RS-5). The Clinical Global Impression-Improvement (CGI-I) score at the end of the study was a secondary endpoint.

A total of 313 patients were randomized in Study 2; 251 completed the study, and 62 discontinued. The change from baseline (reduction) in ADHD-RS-5 total score was statistically significantly greater in patients treated with Qelbree 200 mg or with Qelbree 400 mg than in patients on placebo (see Table 4). Compared with patients on placebo, a statistically significantly greater reduction (improvement) in CGI-I score at the end of the study was observed both in patients treated with Qelbree 200 mg and in patients treated with Qelbree 400 mg.

Study 3 (NCT03247517) was a multicenter, randomized, double-blind, three-arm, placebo-controlled, parallel-group monotherapy trial in patients 12 to 17 years of age with ADHD. Total duration of treatment was 6 weeks, including 1-week titration period (starting at 200mg once daily) and a 5-week maintenance phase. Patients were randomized to receive Qelbree 200 mg, Qelbree 400 mg, or placebo, given once daily as a single dose. The primary endpoint was the change from baseline to the end of study on the total score on the ADHD Rating Scale (ADHD-RS-5). The Clinical Global Impression-Improvement (CGI-I) score at the end of the study was a secondary endpoint.

A total of 310 patients were randomized in Study 3; 266 completed and 44 discontinued. The change from baseline (reduction) in ADHD-RS-5 total score was statistically significantly greater in patients treated with Qelbree 200 mg or with Qelbree 400 mg than in patients on placebo (see Table 4). Compared with patients on placebo, a statistically significantly greater reduction (improvement) in CGI-I score at the end of the study was observed both in patients treated with Qelbree 200 mg and in patients treated with Qelbree 400 mg.

Table 4. Primary Efficacy Results for Change from Baseline in ADHD-RS-5 Total Score in Pediatric Patients (6 to 17 years) with ADHD (Studies 1, 2, 3)

Study Number (Age range)	Treatment Group	Primary Efficacy Measure: ADHD-RS-5 Total Score			
		n	Mean Baseline Score (SD)	LS Mean Change from Baseline (SE)	Placebo-subtracted Difference ^a (95% CI)
Study 1 (6 to 11 years)	100 mg/day*	147	45.0 (6.53)	-16.6 (1.16)	-5.8 (-8.9, -2.6)
	200 mg/day*	158	44.0 (6.80)	-17.7 (1.12)	-6.9 (-10.0, -3.8)
	Placebo	155	43.6 (7.05)	-10.9 (1.14)	--
Study 2 (6 to 11 years)	200 mg/day*	107	43.8 (6.54)	-17.6 (1.43)	-6.0 (-10.0, -1.9)
	400 mg/day*	97	45.0 (6.55)	-17.5 (1.52)	-5.8 (-9.9, -1.7)
	Placebo	97	43.5 (6.79)	-11.7 (1.48)	--
Study 3 (12 to 17 years)	200 mg/day*	94	39.9 (7.22)	-16.0 (1.45)	-4.5 (-8.4, -0.6)
	400 mg/day*	103	39.4 (7.59)	-16.5 (1.38)	-5.1 (-8.9, -1.3)
	Placebo	104	40.5 (6.79)	-11.4 (1.37)	--

ADHD-RS-5 = Attention-Deficit/Hyperactivity Disorder Rating Scale 5th Edition; n: sample size; SD: standard deviation; SE: standard error; LS Mean: least-squares mean; CI: confidence interval, not adjusted for multiple comparisons

^a Difference (drug minus placebo) in least-squares mean change from baseline

* Doses that are statistically significantly superior to placebo after multiplicity adjustment

ADHD Study in Adults

The efficacy of Qelbree in the treatment of ADHD in adults 18 to 65 years of age was evaluated in a short-term, randomized, placebo-controlled, flexible-dose monotherapy trial (Study 4).

Study 4 (NCT04016779) was a multicenter, randomized, double-blind, placebo-controlled, flexible-dose, parallel-group monotherapy trial in adults 18 to 65 years of age with ADHD. Total duration of treatment was 6 weeks, starting at 200 mg once daily Week 1 and titrating up 400 mg once daily Week 2. Dose was adjusted by 200 mg per day once a week to a minimum of 200 mg once daily and maximum of 600 mg once daily thereafter. Patients were randomized to receive Qelbree (200 mg to 600 mg), or placebo, given once daily as a single dose. The primary endpoint was the change from baseline to the end of study on the total score on the ADHD Investigator Symptom Rating Scale (AISRS), an 18-item scale corresponding to 18 symptoms of ADHD. Higher AISRS scores reflect more severe symptoms. The change from baseline in the Clinical Global Impression-Severity of Illness (CGI-S) score at the end of the study was the key secondary endpoint.

A total of 374 adult patients were randomized in Study 4; 267 completed and 107 discontinued. The average dose at end of study was 504 mg per day. The change from baseline (reduction) in the AISRS Total score was statistically significantly greater in adults treated with Qelbree than in adults on placebo (see Table 5). In addition, the change from baseline (reduction) in the CGI-S score was statistically significantly greater in adults treated with Qelbree than in adults on placebo.

Table 5. Primary Efficacy Results for Change from Baseline AISRS Total Score in Adults (18 to 60 years of age) with ADHD (Study 4)

Study Number (Population)	Treatment Group	n	Mean Baseline Score (SD)	LS Mean Change from Baseline (SE)	Placebo-subtracted Difference ^a (95% CI)
Study 4 (Adults)	Qelbree* (200 mg to 600 mg)	175	38.5 (6.56)	-15.5 (0.91)	-3.7 (-6.2, -1.2)
	Placebo	179	37.6 (6.62)	-11.7 (0.90)	--

AISRS: Attention-Deficit/Hyperactivity Disorder Investigator Symptom Rating Scale; n: sample size; SD: standard deviation; SE: standard error; LS Mean: least-squares mean; CI: confidence interval, not adjusted for multiple comparisons
^a Difference (drug minus placebo) in least-squares mean change from baseline
* Treatment is statistically significantly superior to placebo

16 HOW SUPPLIED/STORAGE AND HANDLING

How Supplied

Qelbree (viloxazine extended-release capsules) are available in the following strengths and colors:

100mg (yellow capsule printed with “SPN” on capsule cap and “100” on capsule body with edible black ink).

- Bottles of 100 capsules.....NDC 17772-131-01
- Bottles of 90 capsules.....NDC 17772-131-90
- Bottles of 60 capsules.....NDC 17772-131-60
- Bottles of 30 capsules.....NDC 17772-131-30

150mg (lavender capsule printed with “SPN” on capsule cap and “150” on capsule body with edible black ink).

- Bottles of 100 capsules.....NDC 17772-132-01
- Bottles of 90 capsules.....NDC 17772-132-90
- Bottles of 60 capsules.....NDC 17772-132-60
- Bottles of 30 capsules.....NDC 17772-132-30

200mg (light green capsule printed with “SPN” on capsule cap and “200” on capsule body with edible black ink).

- Bottles of 100 capsules.....NDC 17772-133-01
- Bottles of 90 capsules.....NDC 17772-133-90
- Bottles of 60 capsules.....NDC 17772-133-60
- Bottles of 30 capsules.....NDC 17772-133-30

Storage and Handling

Store at 20°C to 25°C (68°F to 77°F); excursions permitted between 15°C to 30°C (59°F to 86°F).

17 PATIENT COUNSELING INFORMATION

Advise the patient to read the FDA-approved patient labeling (Medication Guide).

Suicidal Thoughts and Behaviors

Advise patients and caregivers to monitor for the emergence of suicidal thoughts or behaviors or symptoms that might be precursors to emerging suicidal ideation or behavior, especially early during treatment and when the dosage is adjusted up or down. Instruct patients and caregivers to report such symptoms to the healthcare provider [see Boxed Warning and Warnings and Precautions (5.1)].

Concomitant Use with Monoamine Oxidase Inhibitors (MAOI)

Caution patients about the concomitant use of Qelbree and monoamine oxidase inhibitors (MAOI), or within 14 days after discontinuing an MAOI, because of an increased risk of hypertensive crisis [see Contraindications (4) and Drug Interactions (7.1)].

Blood Pressure and Heart Rate Increases

Instruct patients that Qelbree can cause elevations of their blood pressure and pulse rate and they should be monitored for such effects [see Warnings and Precautions (5.2)].

Activation of Mania/Hypomania

Advise patients and their caregivers to look for signs of activation of mania/hypomania [see Warnings and Precautions (5.3)].

Somnolence and Fatigue

Advise patients about the potential for somnolence (including sedation and lethargy) and fatigue. Advise patients to use caution when performing activities requiring mental alertness, such as driving a motor vehicle or operating hazardous machinery, until they know how they will be affected by Qelbree [see Warnings and Precautions (5.4)].

Effects on Weight

Advise patients and their caregivers that Qelbree may affect weight and that weight should be monitored while using Qelbree [see Adverse Reactions (6.1)].

Pregnancy

Advise patients that there is a pregnancy registry that monitors pregnancy outcomes in women exposed to Qelbree during pregnancy. Advise females of reproductive potential to inform their healthcare provider of a known or suspected pregnancy to discuss if Qelbree should be discontinued [see Use in Specific Populations (8.1)].

Administration Instructions

Advise patients to take the capsule whole or sprinkled over a teaspoonful or tablespoonful of applesauce or pudding and consume within 15 minutes when mixed with pudding or within 2 hours when mixed with applesauce. Do not cut, chew or crush the capsule [see Dosage and Administration (2.3)].

Qelbree is manufactured by: Catalent Pharma Solutions, LLC, 1100 Enterprise Drive Winchester, KY 40391.
Distributed by: Supernus Pharmaceuticals, Inc. Rockville, MD 20850 USA
Qelbree is a trademark of Supernus Pharmaceuticals, Inc.
RA-QEL-V3 – 202501
© 2025 Supernus Pharmaceuticals Inc.

MEDICATION GUIDE
QELBREE® (Kel' bree)
(viloxazine extended-release capsules)
for oral use

What is the most important information I should know about QELBREE?

QELBREE can cause serious side effects, including:

- **Increased risk of suicidal thoughts or actions.** QELBREE may increase suicidal thoughts or actions in children and adults with attention deficit hyperactivity disorder (ADHD), **especially within the first few months of treatment or when the dose is changed.**

How can I watch for and try to prevent suicidal thoughts and actions?

- Pay close attention to any changes, especially sudden changes in mood, behavior, thoughts, or feelings or if you or your child develops suicidal thoughts or actions. This is very important when QELBREE treatment is started or when the dose is changed.
- Call your healthcare provider right away if you or your child has any new or sudden changes in mood, behavior, thoughts, or feelings, or if you or your child develops suicidal thoughts or actions.
- Keep all follow-up visits with your healthcare provider as scheduled. Call your healthcare provider between visits as needed, especially if you have concerns about symptoms.

Call your healthcare provider or get emergency help right away if you or your child has any of the following symptoms, especially if they are new, worse, or worry you:

- | | |
|---|---|
| ○ attempts to commit suicide | ○ thoughts about suicide |
| ○ new or worse depression | ○ or dying |
| ○ feeling very agitated or restless | ○ new or worse anxiety |
| ○ trouble sleeping (insomnia) | ○ panic attacks |
| ○ acting aggressive, being angry, or violent | ○ new or worse irritability |
| ○ an extreme increase in activity and talking (mania) | ○ acting on dangerous impulses |
| | ○ other unusual changes in behavior or mood |

See “What are the possible side effects of QELBREE?” for more information about side effects.

What is QELBREE?

QELBREE is a prescription medicine used to treat attention deficit hyperactivity disorder (ADHD) in adults and children 6 years of age and older.

It is not known if QELBREE is safe and effective in children less than 6 years of age.

Do not take QELBREE if you or your child:

- takes a medicine used to treat depression called a monoamine oxidase inhibitor (MAOI). Ask your healthcare provider or pharmacist if you are not sure if you or your child takes an MAOI.
- stopped taking an MAOI in the last 14 days.
- takes alosetron, duloxetine, ramelteon, tasimelteon, tizanidine, or theophylline.

Before taking QELBREE, tell your healthcare provider about all your or your child's medical conditions, including if you or your child:

- have, or have a family history of, suicide, bipolar disorder, depression, mania or hypomania
- have blood pressure or heart rate problems
- have severe kidney problems. Your healthcare provider may lower the dose of QELBREE.
- are pregnant or plan to become pregnant. QELBREE may cause harm to the mother when taken during pregnancy. You and your healthcare provider will decide if QELBREE should be taken during pregnancy.
 - Tell your healthcare provider right away if you or your child become pregnant or think they are pregnant during treatment with QELBREE.
 - There is a pregnancy registry for females who are exposed to QELBREE during pregnancy. The purpose of the registry is to collect information about the health of females exposed to QELBREE and their baby. If you become pregnant while taking QELBREE, talk to your healthcare provider about registering with the National Pregnancy Registry for Psychiatric Medications by calling 1-866-961-2388 or go to www.womensmentalhealth.org/preg.
- are breastfeeding or plan to breastfeed. QELBREE passes into your breastmilk. Talk to your healthcare provider about the best way to feed the baby during treatment with QELBREE.

Tell your healthcare provider about all the medicines you or your child take, including prescription and over-the-counter medicines, vitamins, and herbal supplements.

QELBREE and other medicines may affect each other causing possible serious side effects.

Your healthcare provider will decide if QELBREE can be taken with other medicines.

Especially tell your healthcare provider if you or your child take:

- MAOIs
- alosetron
- duloxetine
- ramelteon
- tasimelteon
- tizanidine
- theophylline

Know the medicines you or your child takes. Keep a list of them and show it to your healthcare provider and pharmacist when you or your child get a new medicine.

Do not start any new medicine during treatment with QELBREE without first talking to your healthcare provider.

How should I take QELBREE?

- Take QELBREE exactly as your healthcare provider tells you to take it.
- Take QELBREE 1 time each day with or without food.
- Swallow QELBREE capsules whole. Do not cut, crush, or chew the capsules.
- If QELBREE capsules cannot be swallowed whole, the capsule may be opened and the entire contents sprinkled onto a teaspoonful or tablespoonful of pudding or applesauce.
- Swallow all the food mixture right away, **without chewing**, or within 15 minutes of mixing for pudding, or within 2 hours of mixing for applesauce.
 - **Do not** chew the food mixture.
 - **Do not** store food mixture.
- Talk to your healthcare provider about what you should do if you or your child misses a dose.
- If you or your child take too much QELBREE or overdoses, call your poison control center at 1-800-222-1222 right away, or go to the nearest emergency room.

What should I avoid while taking QELBREE?

Do not drive or operate heavy machinery until you know how QELBREE will affect you. QELBREE may cause you to feel sleepy or tired.

What are the possible side effects of QELBREE?

QELBREE can cause serious side effects, including:

- See “**What is the most important information I should know about QELBREE?**”
- **Increased blood pressure and heart rate.** Your healthcare provider should check your or your child’s blood pressure and heart rate before starting and during treatment with QELBREE.
- **Manic episodes.** Manic episodes may happen in people with bipolar disorder who take QELBREE. Symptoms may include:
 - greatly increased energy
 - racing thoughts
 - unusually grand ideas
 - talking more or faster than usual
 - severe trouble sleeping
 - reckless behavior
 - excessive happiness or irritability
- **Sleepiness and tiredness.** See “**What should I avoid while taking QELBREE?**”

The most common side effects of QELBREE in children 6 to 17 years of age include:

- | | |
|----------------|----------------------|
| • sleepiness | • decreased appetite |
| • tiredness | • nausea |
| • vomiting | • trouble sleeping |
| • irritability | |

The most common side effects of QELBREE in adults include:

- | | |
|--------------|----------------------|
| • insomnia | • headache |
| • sleepiness | • tiredness |
| • nausea | • decreased appetite |
| • dry mouth | • constipation |

Effects on weight. Your healthcare provider should check your or your child’s weight before starting and during treatment with QELBREE.

These are not all of the possible side effects of QELBREE.

Call your doctor for medical advice about side effects. You may report side effects to FDA at 1-800-FDA-1088.

How should I store QELBREE?

- Store QELBREE capsules at room temperature between 68°F to 77°F (20°C to 25°C).
- **Keep QELBREE and all medicines out of the reach of children.**

General Information about the safe and effective use of QELBREE.

Medicines are sometimes prescribed for purposes other than those listed in a Medication Guide. Do not take QELBREE for a condition for which it was not prescribed. Do not give QELBREE to other people, even if they have the same symptoms that you have. It may harm them. You can ask your healthcare provider or pharmacist for information about QELBREE that is written for health professionals.

What are the ingredients in QELBREE?

Active ingredient: viloxazine

Inactive ingredients: ammonium hydroxide, black iron oxide, butyl alcohol, corn starch, ethylcellulose, FD&C Blue #1, FD&C Red #28, FD&C Yellow #5, FD&C Yellow #6, FD&C Yellow #10, gelatin, hypromellose, isopropyl alcohol, lactose monohydrate, medium chain triglycerides, oleic acid, polyethylene glycol, potassium hydroxide, propylene glycol, shellac, strong ammonia solution, sucrose, talc, triacetin, titanium dioxide.

Manufactured by: Catalent Pharma Solutions, LLC, 1100 Enterprise Drive, Winchester KY 40391, USA

Distributed by: Supernus Pharmaceuticals, Inc., Rockville, MD USA 20850

© 2025 Supernus Pharmaceuticals Inc.

For more information, go to www.supernus.com or call 1-866-398-0833.

RA-QBE-MGV3-202501

This Medication Guide has been approved by the U.S. Food and Drug Administration.
Revised: 1/2025

QBE.2025-0037